

Please book and pay for your accommodation directly with the hotel of your choice. Here are the closest options;

* Mention you are going to the NZPIF Conference to receive appropriate discount.

***Scenic Circle Fino Casementi Suites**

87-89 Kilmore Street, Christchurch

Ph (03) 366 8444. Website: www.scenic-circle.co.nz

1brm Suite: \$185.62 incl GST per night

2 brm Suite: \$208.12 incl GST per night

Please quote booking no. 5034138.

Next door to Christchurch Convention Centre

***Cophorne Hotel Durham**

Cnr Durham & Kilmore Sts, Christchurch

Ph (03) 365 4699, Fax (03) 366 6302

Email: cophorne.durham@millenniumhotels.co.nz

Standard Room: \$175.00 incl GST per night

Superior Room: \$195.00 incl GST per night

Breakfast: Full Buffet - \$24.50 incl GST per person

Car parking at the rear of the hotel at no cost.

Across the road from the Christchurch Convention Centre.

***Cophorne Hotel Central**

776 Colombo Street, Christchurch

Ph (03) 379 5880, Fax (03) 365 4806

Email: cophorne.central@millenniumhotels.co.nz

Same prices as above.

Car parking behind hotel at no cost.

5 minutes walk across Victoria Square to the Conference Centre.

Crowne Plaza

Cnr Durham & Kilmore Sts, Christchurch

Ph (03) 365 7799, Fax (03) 371 0723

Email: cmd@crowneplazachristchurch.co.nz

Superior Queen Room: \$250.00 incl GST per night

Park View Queen Room: \$295.00 incl GST per night

Breakfast: \$19.00 to \$28.00 incl GST per person

Car parking at hotel at a cost of \$15.00 per day

Across the road from the Christchurch Convention Centre via an air tunnel.

Chateau Blanc Suites

Cnr Kilmore & Montreal Sts, Christchurch

Ph (03) 365 1600, Fax (03) 353 0974

Email: chateau-blanc-suites@xtra.co.nz

Suites for 2: \$157.50 incl GST

Suites for 3: \$180.00 incl GST

Breakfast: \$18.00 incl GST per person

Free parking underground

1 1/2 blocks walk to Convention Centre

Motels within 5 to 10 minutes drive from Christchurch Convention Centre. (Papanui Road)

Camelot Motor Lodge Ph (03) 355 9124

Ashford Motor Lodge Ph (03) 355 3416

Diplomat Motel Ph (03) 355 6009

More options on web at www.nzpif.org.nz

**At the Christchurch Convention Centre,
Kilmore Street, Christchurch**

MC: Janice Gray

Friday October 19th 2007

10am	Registration Desks/Sponsors Area Open
1pm - 3.30pm	AGM
7.00 - 10.00pm	Welcome Function – Christchurch Art Gallery

Saturday October 20th 2007

8.30am	MC Janice Gray
8.50 - 9.20am	Minister of Building and Construction – Hon Clayton Cosgrove
9.25 - 10.30am	Noel Whittaker "Principles of Money"
10.30 - 11am	Morning Tea
11am - 12pm	Michael Yardney
12 - 1.15pm	Lunch
1.15 - 2.15pm	Breakout sessions:
	1) Mark Withers – "Tax Opportunities and Issues for Property Investors"
	2) Craig Paddon & Accountants – "Exit Strategies"
	3) Adding Value/Increasing Yields
2.15 - 3.15pm	Ian Little, Anaro Investments Ltd – "Commercial Property Investment"
3.15 - 3.45pm	Afternoon Tea
3.45 - 4.15pm	"A Tenant's Perspective"
4.15 - 5.15pm	Michael Yardney – "Mindset Of Super Successful Investors"
6.30 - 7.15pm	Pre Dinner Drinks
7.15 - 11.30pm	Conference Dinner: Theme "In the Black" Entertainment – Fanny & The Buzz

Sunday October 21st 2007

7.30am	World Cup Rugby Final
9.30 - 10am	Morning Tea
10am	MC Janice Gray/Conference
10.40 - 11.30am	ANZ Economist Cameron Bagrie – "What's Happening?"
11.30 - 12.30pm	To Be Advised
12.30 - 1.30pm	Lunch
1.30 - 2.20pm	Joan Baker – "Coach Yourself to Wealth"
2.20 - 3pm	Michael Yardney
3pm	Conference closing
3.10pm	Afternoon Tea

*These times and speakers/breakout sessions are
subject to change without prior notice.*

A full itinerary is available on website www.nzpif.org.nz

Transport From Christchurch Airport

Taxi fare approx \$30.00

Shuttle Fare approx \$20.00 for two people



AGM & Conference 2007

"Inspiration & Education"

**Christchurch Convention Centre
19 – 21 October 2007**

The New Zealand Property Investors' Federation Inc. offers property investors an outstanding opportunity to attend our 2007 Conference & AGM. Seminars, workshops and networking among other like-minded investors will provide a stimulating weekend. Places are limited so register early. Visit www.nzpif.org.nz for more information.

KEYNOTE SPEAKERS



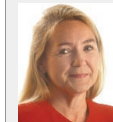
Michael Yardney is a successful Melbourne based property developer and property investor. As director of Metropole Properties, his opinions as a property commentator are highly sought after and frequently quoted in the press.



Noel Whittaker is a Director of Whittaker Macnaught Pty Ltd. He was named Australian Investment Planner of the Year for 1998 and in April 2003 was awarded the Australian Centenary Medal in recognition of his services to the financial services industry.



Ian Little — Founder of The Anaro Group. The Anaro Group specialise in commercial property acquisition & management on behalf of Joint Ventures. The property portfolio Ian Little began 20 years ago is now approaching NZ\$4400 million nationally.



Joan Baker is a company director and a consultant to business and non-profit organisations. Together with partner Martin Hawes provides wealth coaching. Joan specialises in helping organisations and individuals plan for their future.



Mark Withers — Withers Tsang & Co Ltd was founded in 1998 by Mark Withers and Stephen Tsang, Chartered Accountants, who between them have over 15 years of experience in property matters.